

# ADAM OTLEWSKI

## HAND-DYED LEATHER COLORS

All leather components are individually cut natural cow hide and hand-dyed at the time of fabrication; some variance is to be expected in color and leather grain. Custom matched colors may be possible, please inquire.



Ash



Graphite



Lead



Sable



Charcoal



Blush



Putty



Mustard



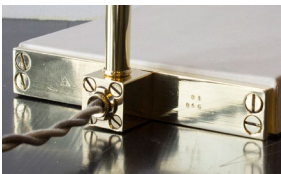
Gochujang



Tennis

## METAL FINISHES

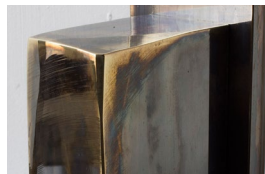
All metal finishes are hand-applied living finishes and will patina and change for the better with time. Slight variations in tone and appearance are to be expected.



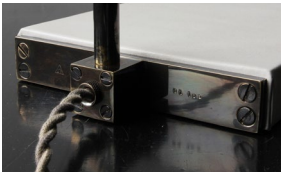
Polished unlacquered brass



Polished nickel plated brass



Smoke polished brass



Dark patinated brass



Matte blackened brass

## GOATSKIN PARCHMENT

Goatskin parchment shades are hand-stitched with a coordinating goatskin parchment lace. Hides are natural products and can vary considerably in texture and tone.



# ADAM OTLEWSKI



## SERIES 01 DESK LAMP

Solid machined brass with hand-dyed waxed leather, hand-dyed braided cotton cord, and pivoting leather shade. 19"H x 8-1/4"D x 6-1/4"W

Available finishes:

- Polished unlacquered brass
- Dark patinated brass
- Polished nickel plated brass (*shown*)

All material finishes are living finishes: they will change and patina for the better with time and use. Every product is individually hand assembled; slight variations in color, size and shape are to be expected. Recommended bulb "G16 5W LED 2700k dimmable" included.

E26 socket with single turn key.

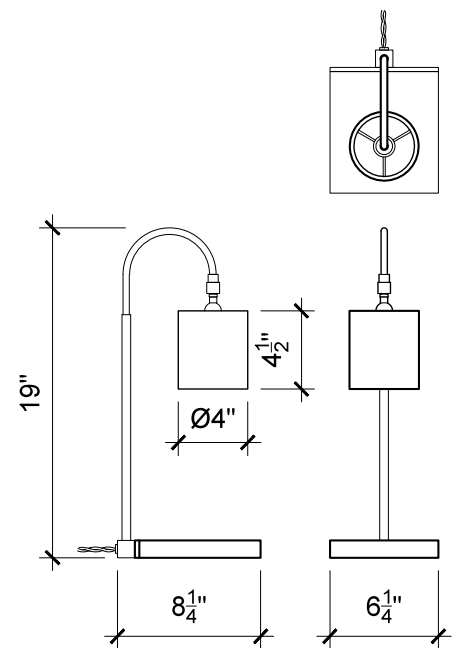
Maximum 40 watt bulb.

Not suitable for damp locations.

Lead time 4-6 weeks.

*It may be possible to place rush orders for a 20% fee.*

*Custom sizing, configurations and finishes are available, please inquire.*



# ADAM OTLEWSKI



## SERIES 01 FLOOR LAMP

Solid machined brass with hand-dyed waxed leather, hand-dyed braided cotton cord, and pivoting leather shade. 51"H x 8"W x 13-1/4"D

Available finishes:

- Polished unlacquered brass
- Dark patinated brass (*shown*)
- Polished nickel plated brass

All material finishes are living finishes: they will change and patina for the better with time and use. Every product is individually hand assembled; slight variations in color, size and shape are to be expected. Recommended bulb "60 Watt equivalent G18-1/2 White Dimmable" included. E26 socket with single turn key.

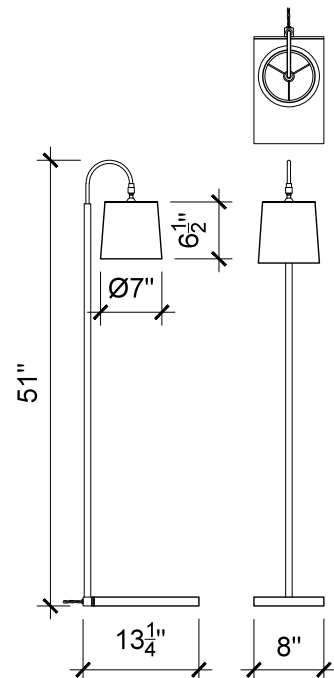
Maximum 40 watt bulb.

Not suitable for damp locations.

Lead time 4-6 weeks.

*It may be possible to place rush orders for a 20% fee.*

*Custom sizing, configurations and finishes are available, please inquire.*



# ADAM OTLEWSKI



## SERIES 01 SMALL SCONCE

Solid machined brass with hand-dyed waxed leather pivoting shade. Also available with backplate switch, or corded plug-in version. 8-7/8"H x 7-3/4"D x 4"W

Available finishes:

- Polished unlacquered brass (*shown*)
- Dark patinated brass
- Polished nickel plated brass

Hardwired fixtures must be installed by a licensed electrician. Mounts to a standard vertical single gang junction box (screw distance 3-1/4"). All material finishes are living finishes: they will change and patina for the better with time and use. Every product is individually hand assembled; slight variations in color, size and shape are to be expected. Recommended bulb "G16 5W LED 2700k Dimmable" included. E26 socket (keyless).

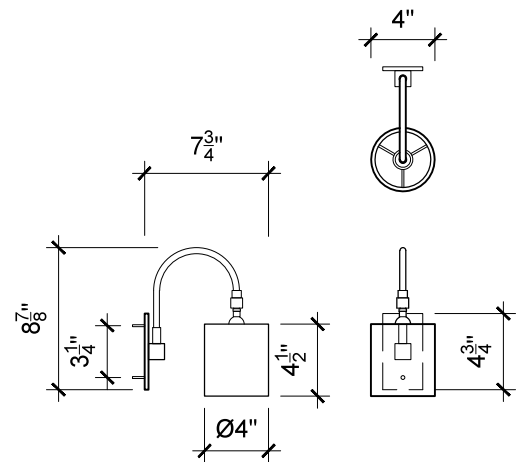
Maximum 40 watt bulb.

Not suitable for damp locations.

Lead time 4-6 weeks.

*It may be possible to place rush orders for a 20% fee.*

*Custom sizing, configurations and finishes are available, please inquire.*



# ADAM OTLEWSKI



## SERIES 01 LARGE SCONCE

Solid machined brass with hand-dyed waxed leather pivoting shade. Also available with backplate switch, or corded plug-in version. 15-7/8"H x 8-3/4"D x 6"W

Available finishes:

- Polished unlacquered brass
- Dark patinated brass (*shown*)
- Polished nickel plated brass

Hardwired fixtures must be installed by a licensed electrician. Mounts to a standard vertical single gang junction box (screw distance 3-1/4"). All material finishes are living finishes: they will change and patina for the better with time and use. Every product is individually hand assembled; slight variations in color, size and shape are to be expected. Recommended bulb "G16 5W LED 2700k Dimmable" included. E26 socket (keyless).

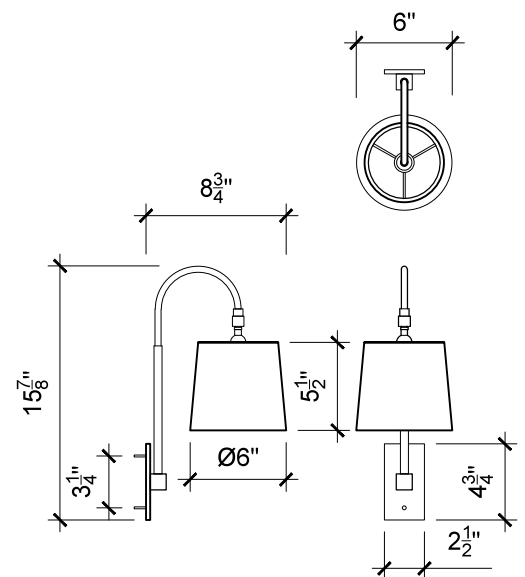
Maximum 40 watt bulb.

Not suitable for damp locations.

Lead time 4-6 weeks.

*It may be possible to place rush orders for a 20% fee.*

*Custom sizing, configurations and finishes are available, please inquire.*





# ADAM OTLEWSKI



## SERIES 01 UPRIGHT SCONCE

Solid machined brass with hand-dyed waxed leather shade. 15"H x 8-3/4"D x 6"W

Available finishes:

- Polished unlacquered brass (*shown*)
- Dark patinated brass
- Polished nickel plated brass

Hardwired fixtures must be installed by a licensed electrician. Mounts to a standard vertical single gang junction box (screw distance 3-1/4"). All material finishes are living finishes: they will change and patina for the better with time and use. Every product is individually hand assembled; slight variations in color, size and shape are to be expected. Recommended bulb "E26 5W Dimmable LED 2700k" included. E26 socket (keyless).

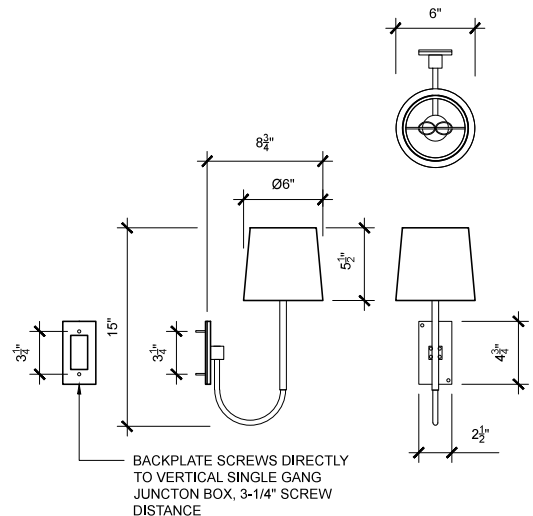
Maximum 40 watt bulb.

Not suitable for damp locations.

Lead time 4-6 weeks.

*It may be possible to place rush orders for a 20% fee.*

*Custom sizing, configurations and finishes are available, please inquire.*



# ADAM OTLEWSKI



## SERIES 01 SMALL PENDANT

Solid machined brass, hand-dyed waxed leather shade, and hand-dyed braided cotton cord.

16-3/4"H (stem and shade) x 7" Diameter

Available finishes:

- Polished unlacquered brass
- Dark patinated brass (*shown*)
- Polished nickel plated brass

Hardwired fixtures must be installed by a licensed electrician. 5" diameter canopy mounts to any standard ceiling junction box, crossbar included. All material finishes are living finishes: they will change and patina for the better with time and use. Every product is individually hand assembled; slight variations in color, size and shape are to be expected. Recommended bulb "G16 5W LED 2700k Dimmable" included.

E-26 socket (keyless).

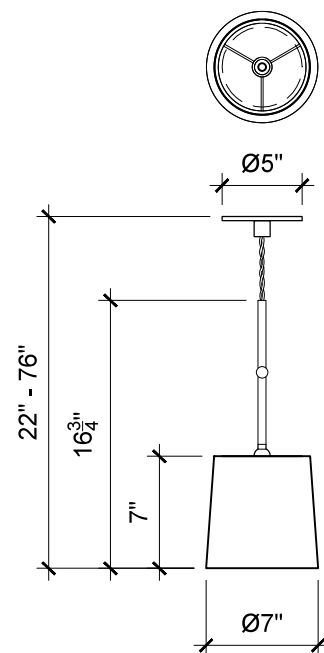
Maximum 40 watt bulb.

Not suitable for damp locations.

Lead time 4-6 weeks.

*It may be possible to place rush orders for a 20% fee.*

*Custom sizing, configurations and finishes are available, please inquire.*



# ADAM OTLEWSKI



## SERIES 01 LARGE PENDANT

Solid machined brass, hand-dyed waxed leather shade, and hand-dyed braided cotton cord.

23"H (stem and shade) x 14" Diameter

Available finishes:

- Polished unlacquered brass (*shown*)
- Dark patinated brass
- Polished nickel plated brass

Hardwired fixtures must be installed by a licensed electrician. 5" diameter canopy mounts to any standard ceiling junction box, crossbar included. All material finishes are living finishes: they will change and patina for the better with time and use. Every product is individually hand assembled; slight variations in color, size and shape are to be expected. Recommended bulb "G16 5W LED 2700k Dimmable" included.

E-26 socket (keyless).

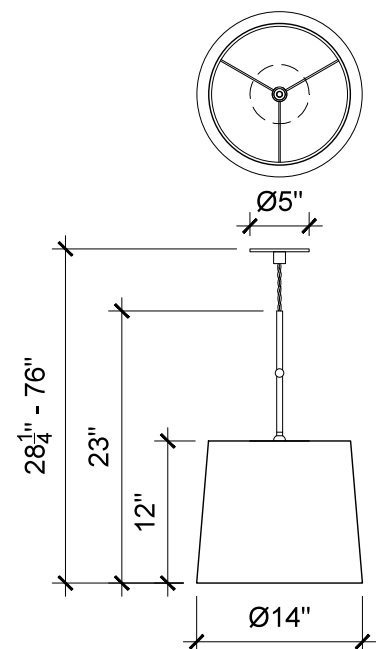
Maximum 40 watt bulb.

Not suitable for damp locations.

Lead time 4-6 weeks.

*It may be possible to place rush orders for a 20% fee.*

*Custom sizing, configurations and finishes are available, please inquire.*





# ADAM OTLEWSKI



## SERIES 02 TABLE LAMP

Solid machined brass base, hand-stitched goatskin parchment shade, and hand-dyed braided cotton cord.  
18"H x 14"Diameter

Available finishes:

- Polished unlacquered brass (*shown*)
- Dark patinated brass
- Polished nickel plated brass

Available shades:

- Goatskin parchment (*shown*)

All material finishes are living finishes: they will change and patina for the better with time and use. Every product is individually hand assembled; slight variations in color, size and shape are to be expected. Recommended bulb "G16 5W LED 2700k dimmable" included.

E26 socket with single turn key.

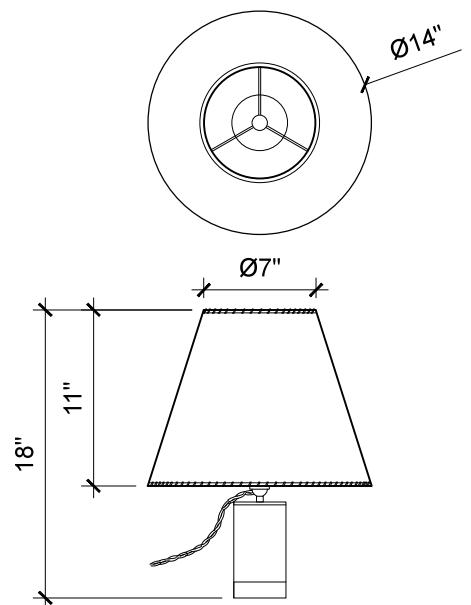
Maximum 40 watt bulb.

Not suitable for damp locations.

Lead time 4-6 weeks.

*It may be possible to place rush orders for a 20% fee.*

*Custom sizing, configurations and finishes are available, please inquire.*



# ADAM OTLEWSKI



## SERIES 02 FLOOR LAMP

Solid machined brass base, hand-stitched goatskin parchment shade, and hand-dyed braided cotton cord.

55"H x 20-3/4"D x 16"W

Available finishes:

- Polished unlacquered brass (*shown*)
- Dark patinated brass
- Polished nickel plated brass

Available shades:

- Goatskin parchment (*shown*)

All material finishes are living finishes: they will change and patina for the better with time and use. Every product is individually hand assembled; slight variations in color, size and shape are to be expected. Recommended bulb "60 Watt equivalent G18-1/2 White Dimmable" included. E26 socket with single turn key.

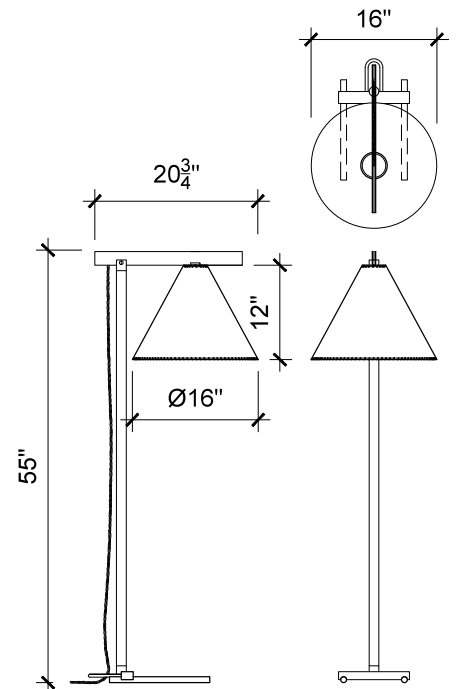
Maximum 40 watt bulb.

Not suitable for damp locations.

Lead time 4-6 weeks.

*It may be possible to place rush orders for a 20% fee.*

*Custom sizing, configurations and finishes are available, please inquire.*



# ADAM OTLEWSKI



## SERIES 02 SMALL SCONCE

Solid machined brass base, hand-stitched goatskin parchment shade. Fixture may be mounted oriented up or down.  
6-5/8"H x 6"D X 5"W, Shade 5" dia. x 5"H

### Available finishes:

- Polished unlacquered brass (*shown*)
- Dark patinated brass
- Polished nickel plated brass

### Available shades:

- Goatskin parchment (*shown*)
- All available leather colors

Hardwired fixtures must be installed by a licensed electrician. Mounts to a standard vertical single gang junction box (screw distance 3-1/4"). All material finishes are living finishes: they will change and patina for the better with time and use. Every product is individually hand assembled; slight variations in color, size and shape are to be expected. Recommended bulb "G16 5W LED 2700k Dimmable" included. E26 socket (keyless).

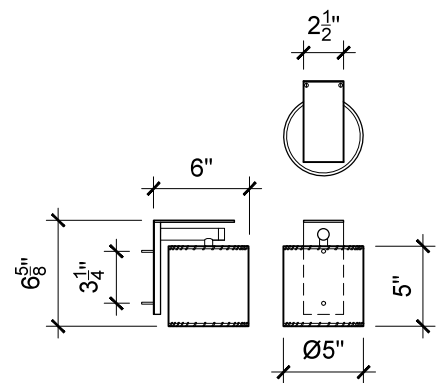
Maximum 40 watt bulb.

Not suitable for damp locations.

Lead time 4-6 weeks.

*It may be possible to place rush orders for a 20% fee.*

*Custom sizing, configurations and finishes are available, please inquire.*



# ADAM OTLEWSKI



## SERIES 02 LARGE SCONCE

Solid machined brass base, hand-stitched goatskin parchment shade. Fixture may be mounted oriented up or down.  
8-1/8"H x 7"D X 6"W, Shade 6" dia. x 6-1/2"H

### Available finishes:

- Polished unlacquered brass (*shown*)
- Dark patinated brass
- Polished nickel plated brass

### Available shades:

- Goatskin parchment (*shown*)
- All available leather colors

Hardwired fixtures must be installed by a licensed electrician. Mounts to a standard vertical single gang junction box (screw distance 3-1/4"). All material finishes are living finishes: they will change and patina for the better with time and use. Every product is individually hand assembled; slight variations in color, size and shape are to be expected. Recommended bulb "G16 5W LED 2700k Dimmable" included. E26 socket (keyless).

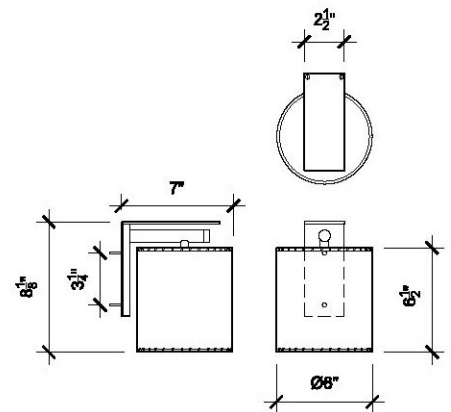
Maximum 40 watt bulb.

Not suitable for damp locations.

Lead time 4-6 weeks.

*It may be possible to place rush orders for a 20% fee.*

*Custom sizing, configurations and finishes are available, please inquire.*



# ADAM OTLEWSKI



## SERIES 03 FLOOR LAMP

Sculpted solid brass machined with recessed hex-head fasteners, goatskin parchment shade.

43"H x 12-1/2"D x 7" W

Available finishes:

- Smoke (*shown*)
- Polished unlacquered brass
- Dark patinated brass
- Polished nickel plated brass

All material finishes are living finishes: they will change and patina for the better with time and use. Every product is individually hand assembled; slight variations in color, size and shape are to be expected. Recommended bulb "G16 5W LED 2700k" included.

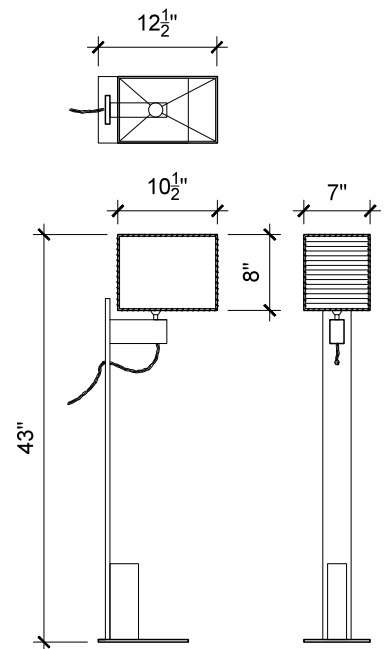
Maximum 40 watt bulb.

Not suitable for damp locations.

Lead time 4-6 weeks.

*It may be possible to place rush orders for a 20% fee.*

*Custom sizing, configurations and finishes are available, please inquire.*





# ADAM OTLEWSKI



## SERIES 03 SCONCE

Sculpted solid machined brass, goatskin parchment shade. Corded with plug (*shown*) or hardwired.  
12-5/8"H x 5-1/2"D x 7" W

Available finishes:

- Smoke (*shown*)
- Polished unlacquered brass
- Dark patinated brass
- Polished nickel plated brass

All material finishes are living finishes: they will change and patina for the better with time and use. Every product is individually hand assembled; slight variations in color, size and shape are to be expected. Recommended bulb "G16 5W LED 2700k" included.

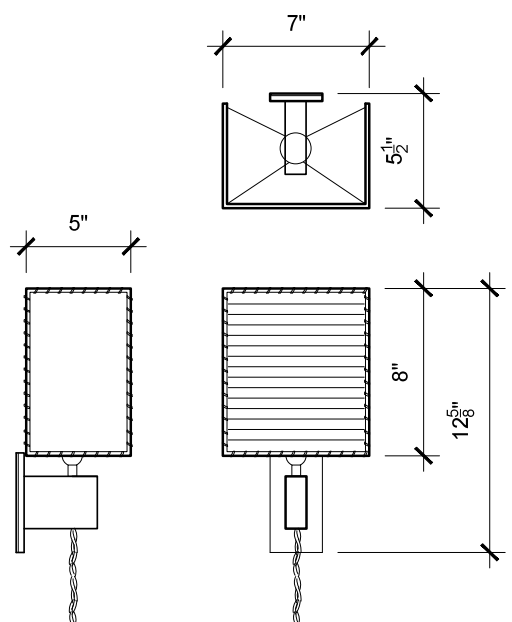
Maximum 40 watt bulb.

Not suitable for damp locations.

Lead time 4-6 weeks.

*It may be possible to place rush orders for a 20% fee.*

*Custom sizing, configurations and finishes are available, please inquire.*



# ADAM OTLEWSKI



## UNTITLED SIDE TABLE

Solid machined brass with recessed hex-head fasteners.  
20"H x 12"D x 8-1/2" W

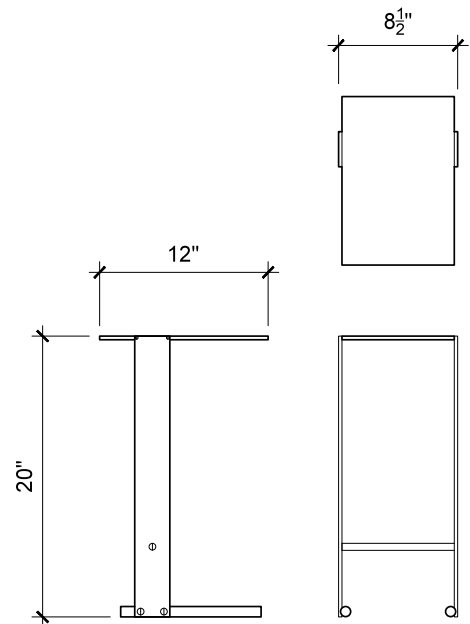
Available finishes:

- Polished unlacquered brass (*shown*)
- Matte blackened brass

All material finishes are living finishes: they will change and patina for the better with time and use. Every product is individually hand assembled; slight variations in color, size and shape are to be expected. Lead time 4-6 weeks.

*It may be possible to place rush orders for a 20% fee.*

*Custom sizing, configurations and finishes are available, please inquire.*



# ADAM OTLEWSKI

